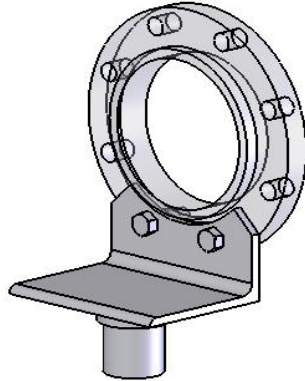


PIPE SUPPORTS



BOLTED FLANGE SUPPORT

FLANGE SIZE (150 LBS)	FLANGE BOLT HOLE QTY.	BOLT HOLE DIA.	MATERIAL SIZE (THICKNESS)	STAND PIPE SIZE W/O ADJUSTER	STAND PIPE SIZE WITH ADJUSTER
4"	(2)	3/4"	3/8"	2 - 1/2"	3"
6"	(2)	7/8"	3/8"	2 - 1/2"	3"
8"	(2)	7/8"	3/8"	2 - 1/2"	3"
10"	(2)	1"	3/8"	2 - 1/2"	3"
12"	(2)	1"	3/8"	2 - 1/2"	3"
14"	(4)	1 - 1/8"	1/2"	3"	4"
16"	(4)	1 - 1/8"	1/2"	3"	4"
18"	(4)	1 - 1/4"	1/2"	4"	6"
20"	(4)	1 - 1/4"	1/2"	4"	6"
24"	(4)	1 - 3/8"	1/2"	4"	6"
30"	(4)	1 - 3/8"	5/8"	4"	6"
36"	(4)	1 - 5/8"	5/8"	4"	6"

- BOLTED FLANGE SUPPORTS ARE USED TO SUPPORT FLANGE CONNECTIONS
- 300 LBS FLANGE SUPPORTS ARE MADE TO ORDER
- FLANGE BOLTS ORDERED SEPARATELY

AVAILABLE FINISHES: PLAIN, PRIME COAT, ELECTRO GALVANIZED, HOT DIP GALVANIZED, T-304 AND T-316

TRIPAC

A DIVISION OF TRIPAC MARKETING, INC.

475 KLUG CIRCLE • CORONA, CA 92880-6406
(800) 720-8771 • FAX: (888) 718-0696