

TRIPAC FIG. TP-1 STANDARD CLEVIS HANGER

SIZE RANGE-1/2" THRU 36" PIPE

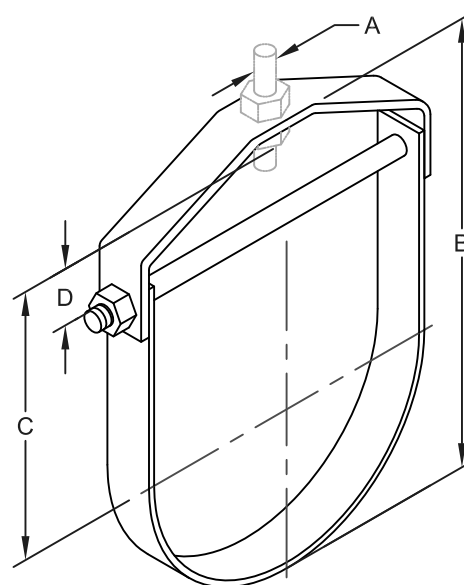
SERVICE-DESIGNED FOR SUSPENSION OF NON-INSULATED PIPE, IF INSULATED PIPE IS REQUIRED USE WITH SHIELD

MATERIAL-CARBON STEEL, T-304 AND T-316

FINISHES-PLAIN, ELECTRO-GALVANIZED, HDG

COMPLIES WITH FEDERAL SPECIFICATION WW-H-171-E (TYPE #1) AND MANUFACTURERS STANDARDIZATION SOCIETY MSS SP-58 AND SP-69 (TYPE #1)

MAXIMUM TEMPERATURE RATING-650°F / 343°C



DIMENSIONS & WEIGHTS

PIPE SIZE	ROD SIZE A		B	C	D	MAX. REC. LOAD LBS	APPROX. WT./100
	STD	NFPA					
1/2"	3/8"	3/8"	2-1/16"	1-3/16"	1"	610	36
3/4"	3/8"	3/8"	2-7/8"	1-7/8"	1"	610	38
1"	3/8"	3/8"	3-1/4"	2-1/16"	1"	610	42
1-1/4"	3/8"	3/8"	3-9/16"	2-1/4"	1"	610	46
1-1/2"	3/8"	3/8"	3-7/8"	2-3/8"	1"	610	49
2"	3/8"	3/8"	4-7/16"	2-3/4"	1"	610	55
2-1/2"	1/2"	3/8"	5-5/16"	3-1/4"	1"	1130	124
3"	1/2"	3/8"	5-15/16"	3-1/2"	1-1/4"	1130	140
3-1/2"	1/2"	3/8"	6-7/16"	3-3/4"	1-1/4"	1130	152
4"	5/8"	3/8"	7-3/8"	4-1/4"	1-1/2"	1430	190
5"	5/8"	1/2"	8-15/16"	5-1/4"	1-1/2"	1430	235
6"	3/4"	1/2"	9-13/16"	5-1/2"	1-1/2"	1940	317
8"	3/4"	1/2"	12-9/16"	7-1/8"	2"	2000	428
10"	7/8"	5/8"	16-1/4"	9-5/8"	3-1/4"	3600	918
12"	7/8"	5/8"	18-9/16"	10-13/16"	3-1/8"	3800	1086
14"	1"	----	20-3/4"	12-3/8"	4"	4200	1267
16"	1"	----	22-7/8"	13-3/16"	3-3/4"	4600	1930
18"	1"	----	25-3/4"	15-9/32"	4-7/16"	4800	2264
20"	1-1/4"	----	28-13/16"	17-1/16"	5-3/16"	4800	3531
*24"	1-1/4"	----	32-1/8"	18-1/4"	4-7/16"	4800	4431
*30"	1-1/4"	----	38-7/8"	21-7/8"	5"	6000	6940
*36"	1-1/2"	----	48"	27-3/4"	5-3/4"	9500	18103

*FURNISHED WITH PIPE SPACER TO SUPPORT MAXIMUM LOAD RATING

TRIPAC

475 KLUK CIRCLE • CORONA, CA 92880-6406
(951) 280-4488 • FAX: (951) 272-4445

A DIVISION OF TRIPAC MARKETING, INC.

WWW.TRIPACONLINE.COM