

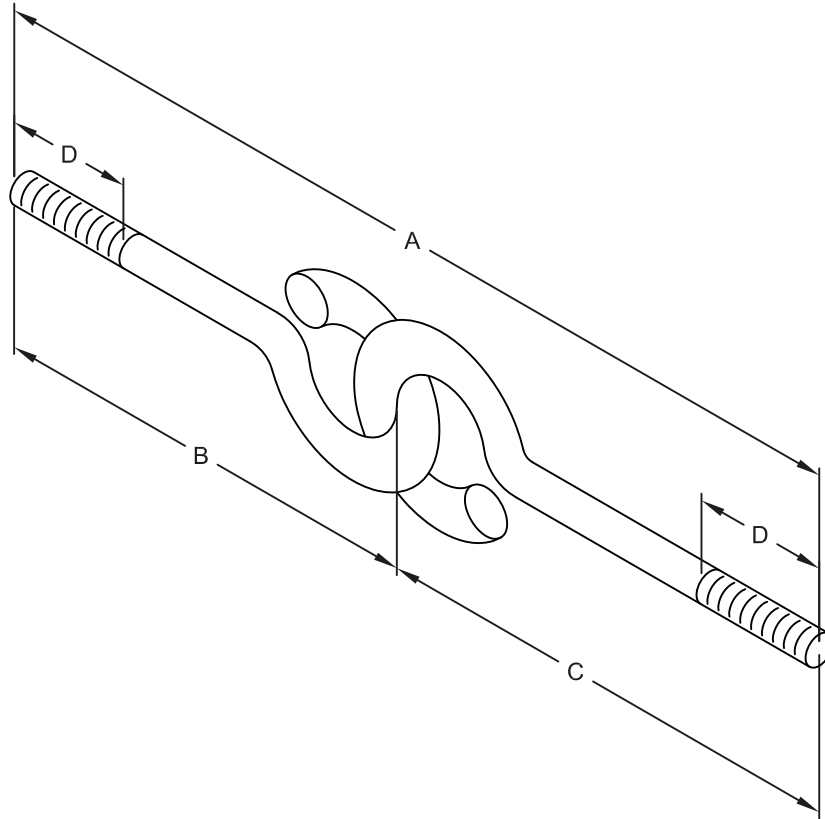
TRIPAC FIG. TP-102L LINKED WELD LESS EYE ROD

SIZE RANGE-3/8" THRU 1-1/2" ROD

SERVICE-DESIGNED FOR USE IN A HANGER ASSEMBLY WHERE UNIVERSAL MOVEMENT IS NECESSARY.

MATERIAL-CARBON STEEL, T-304 AND T-316

FINISHES-PLAIN, ELECTRO-GALVANIZED, HDG



DIMENSIONS & WEIGHTS

ROD SIZE	D	MAX. REC. LOAD lbs. FOR SERVICE TEMPS. 650°F / 343°C
3/8"	2-1/2"	240
1/2"	2-1/2"	440
5/8"	2-1/2"	705
3/4"	3"	1050
7/8"	3-1/2"	1470
1"	4"	1940
1-1/4"	5"	3120
1-1/2"	6"	4650

TRIPAC

475 KLUG CIRCLE • CORONA, CA 92880-6406
(951) 280-4488 • FAX: (951) 272-4445

A DIVISION OF TRIPAC MARKETING, INC.

WWW.TRIPACONLINE.COM